

Campus Critters | *Insects*



Brimstone moth

A yellow, night-flying moth with distinctive brown-and-white spots on its angular forewings. It frequently visits gardens, but also likes woods, scrub and grasslands.



Hairy yellow-face bee

Males of this species are easily distinguished by the hairy face. The face is whitish rather than yellowish and the antennae are orange beneath.

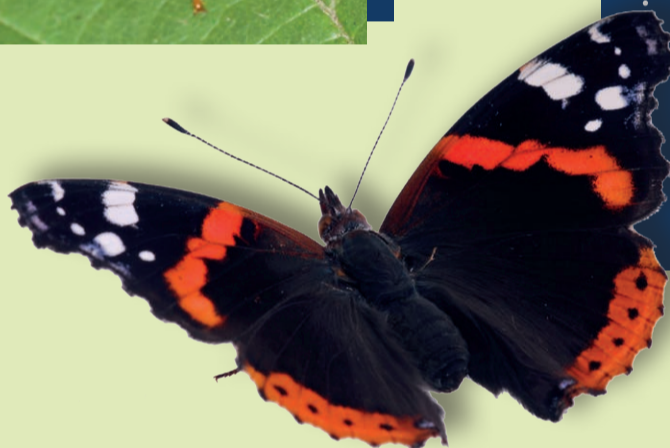
Green shieldbug

Native to the UK, the common green shieldbug is bright green with tiny black dots and dark wings. It feeds on a wide variety of plants and in spring, they lay their eggs on the undersides of leaves.



Red admiral

An unmistakable garden visitor! The red admiral is mainly black, with broad, red stripes on the hindwings and forewings, and white spots near the tips of the forewings.



Field grasshopper

The Common field grasshopper can be found in grassy areas throughout summer. Males can be seen rubbing their legs against their wings to create a 'song' for the females. They are mottled brown in colour, with barring on the sides.

Cardinal beetle

A medium-sized, bright red beetle, with black legs and knobbly antennae. The adults are present during the summer and can often be found sunbathing on flowers or tree trunks. They are predators and feed on other insects flying around the flowers on which they are perched.



Common blue damselfly

The male Common blue damselfly is pale blue with bands of black along the body. It can be found around almost any waterbody and is a regular visitor to gardens from April to September.

